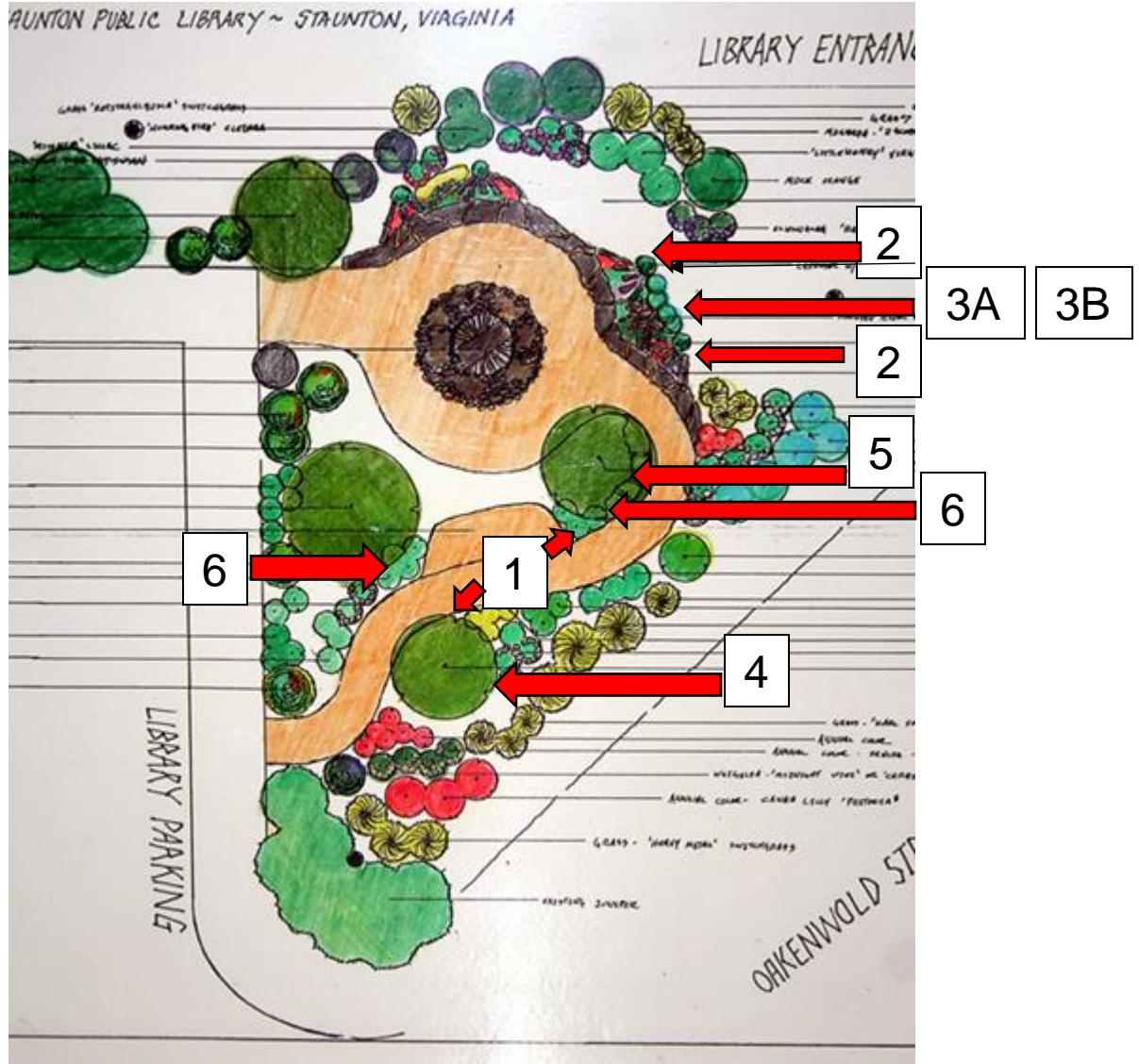


Scavenger Hunt



The Brenda L. Papke sensory garden is located to the right of the main entrance of the Staunton Public Library. Start your journey with a fun scavenger hunt in the children's level of the library to learn about the plants in the garden. Then, go outside to see, smell, touch, taste, and hear all that the garden has to offer and find the plants you have just learned about. Most of all, have FUN! If the book you are searching for is not available, still go to the area where the book would normally be to take a look at other books about gardens! After you've finished, ask for the answer key at the ground level desk.

Written by: Morgan Gosbee, Maddie Schimpf & Taryn Weil (students at Murphy Deming College of Health Sciences) and Kayla Payne (librarian)

0. First, let's find out what a **sensory garden** does!

- Using the computer catalog: Find the book *How Community Gardens Work* by Louise Spilsbury (pg. 12). Call number/shelf location: _____
- Sensory gardens are designed to stimulate people's senses, so they can see, feel, taste, smell, and hear aspects of the nature. People of all abilities can participate in the sensory garden. The sidewalks are wide enough that even _____ can roll through!

1: **Mint** (chocolate, pineapple, spearmint)

- Using the computer catalog: Find the book *A Kid's Guide to How Herbs Grow* by Patricia Ayers (pg. 6) Call number/shelf location: _____
 - Herb families can include many similar herbs. Some members of the mint family include, _____, _____, _____, _____.

#2: **Lavender**

- Using the computer catalog: Find the book *How Does My Garden Grow* by DK Publishing (pg.25). Call number/shelf location: _____
 - Name two uses for lavender?
 - _____

#3: **Rosemary (A) and Thyme (B)**

- Using the computer catalog: Find the book *The Children's Kitchen Garden: A Book of Gardening, Cooking, and Learning* by Georgeanne & Ethel Brennan (pg. 79 for part one, pg. 82 for part two). Call number/shelf location: _____
 - (A): Rosemary leaves are thin and spiky sprigs. Its powerful scent and taste is used often in _____ kitchens, a region where the herb thrives!
 - (B): Thyme is a great herb to use when cooking meats and chicken, on cheese or vegetables, and even with figs and strawberries. The fragrant lavender or whitish blossoms are _____ and can be used to make infusions as well with honey!

#4: **Tree Bark**

- Using the computer catalog, locate: *The Usborne Internet-Linked Library of Science World of Plants* by, Laura Howell, Kirsteen Rogers & Corinne Henderson pg. 15. Call number/shelf location: _____
 - Why does bark peel?

#5: **Paperback Maple Tree**

- Using the computer catalog, locate: *Leaves and Trees* by Elaine Pascoe (pg. 25) Call number/shelf location: _____
 - Maple tree seeds are winged and look like helicopters. They are called _____.

#6: **Coneflowers**

- Using the computer catalog, locate: *Making Butterfly Gardens* by Dana Meachen Rau (pg.15)
- Butterflies are attracted to _____ coneflowers. You can find butterfly bushes and coneflowers in the sensory garden!

Sensory Garden Scavenger Hunt Answers:

- Question 0: Wheelchairs
 - (J 635 S) pg. 12
- Question 1: chocolate, peppermint, spearmint, orange, apple
 - (J 635.7 A) pg. 6
- Question 2: killing germs and helping people relax
 - (J 635.965 H) pg. 25
- Question 3: Mediterranean
 - (J 635.9 B) pg. 79
- Question 4: Edible
 - (J 635.9 B 7-97) pg. 82
- Question 5: Because it cannot grow or stretch, it peels as the trunk gets wider.
 - (J 581 H) pg. 15
- Question 6: Samaras
 - (J 581.497 P) pg. 25
- Question 7: Purple
 - (J 595.789 R) pg. 15